



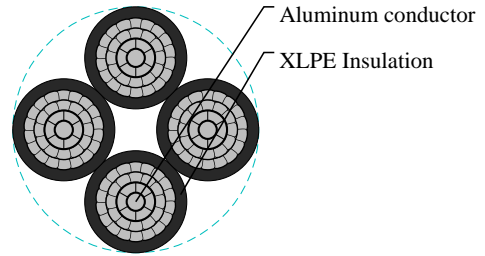
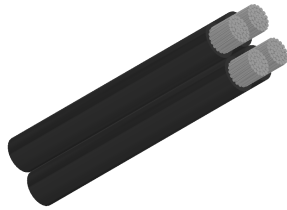
Caledonian

Aluminium Conductor Cables

www.caledonian-cables.com

marketing@caledonian-cables.com

600/1000V ABC –Aerial Bundled Cables to BS 7870-5 (AL/XLPE) 4C120



APPLICATIONS

The aerial bundled cables designed for overhead distribution lines have all conductors made of aluminium 1350 and insulated with XLPE. Phase and neutral cores are laid up in a bundle with a left hand lay. Can be used for fixed installation as overhead power lines up to 1000 V incl.

STANDARDS

BS 7870-5:1999

CABLE CONSTRUCTION

Conductor (for either phase, neutral or street lighting):The conductors shall be of aluminium 1350 wires and are compacted circular stranded(RM).

Insulation:XLPE. 1, 2 and 3 raised longitudinal ribs on the surface of the cores. The surface of the neutral core should have at least 12 ribs for cross-sections up to 50 mm² and a minimum of 16 ribs for cores above 50 mm². In the case of five core bundles the surface of the protective core should be smooth.

Assembly:2 up to 4 cores of equal cross section are stranded together in left-hand lay, additionally 1 or 2 cores of reduced cross section can be co-stranded.

PHYSICAL AND THERMAL PROPERTIES

Rated voltage:0.6/1 kV

Test voltage:4 Veff kV

Laying temperature:min. -20 °C

Operating temperature:-30 ~ +80 °C

Conductor temperature:max. +80 °C

Short-circuit temperature:max. +130 /5 °C/s

Bending radius (min.):18 × o of cable

DIMENSION AND PARAMETERS

No. of Cores × Cross-sectional Area	Approx. Overall Diameter	Cable Weight	max. conductor resistance	min. breaking load of conductor strand	Current rating in the air
No.×mm ²	mm	kg/km	Ω/km	kN	A
4x120 RM	54.4	1632	0.253	18.6	290